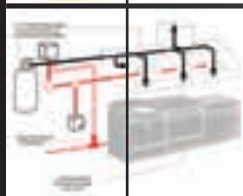
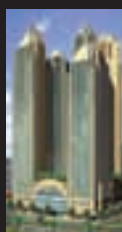


# BRISTOL

- Commercial
- Industrial
- High rise buildings

## Extinguishers

Design, Supply, Installation,  
Testing, Commissioning,  
Maintenance, and Service  
of Firefighting and Fire  
Protection Systems



**Think fire protection...**

**...Thank**

**BRISTOL**

|   |    |
|---|----|
| Dry powder fire extinguisher – Pressurized            | 2  |
| Dry powder fire extinguisher – Cartridge Type         | 4  |
| Dry powder fire extinguisher– Automatic               | 6  |
| Dry powder fire extinguisher Trolley – Pressurized    | 8  |
| Dry powder fire extinguisher Trolley – Cartridge Type | 10 |
| CO <sub>2</sub> fire extinguisher                     | 12 |
| CO <sub>2</sub> fire extinguisher Trolley             | 14 |
| Foam fire extinguisher – Pressurized                  | 16 |
| Foam fire extinguisher – Cartridge Type               | 18 |
| Foam fire extinguisher trolley – Pressurized          | 20 |
| Foam fire extinguisher trolley – Cartridge Type       | 22 |
| Water fire extinguisher – Pressurized                 | 24 |
| Water fire extinguisher – Cartridge Type              | 26 |
| Water fire extinguisher trolley – Pressurized         | 28 |
| Water fire extinguisher trolley – Cartridge Type      | 30 |



# PRESSURIZED DRY POWDER



## Model: DP 1A, DP 1, DP 2, DP 3, DP 4/4.5, DP 6, DP 9, DP 12

### Application

- Bristol dry chemical extinguishers are designed for protection of light and ordinary hazards. These compact and portable extinguishers are suited for both industrial and commercial fire protection needs. All extinguishers are designed to fit most wall-mounted storage cabinets. Typical applications include light manufacturing, warehousing, restaurants, office buildings, shop areas, auto repair shops, paint process areas, welding areas, machinery, apartment buildings, parking garages, aircraft servicing areas, material handling vehicles and many others.
- Pressure type dry powder fire extinguisher, suitable for A, B, C & E fire classes such as wood, flammable liquids, gases & electric fire.
- Reliable components are carefully chosen to give maximum efficiency along with high quality agent, to achieve high performance.
- Bristol extinguishers are designed and manufactured in compliance with BS 5423 & BS/EN3 3.1 & 3.3.

#### Features

- Seamless deep drawn container made of high tensile cold rolled sheet.
- Minimal welding points.
- Polyester resin electrostatically coated to give high quality appearance & protection against corrosion.
- High bursting pressure.
- Quality silk-screen printing with operating instruction.
- Quality machined and chrome plated brass valve with EPDM .O. ring.
- Built in pressure relief mechanism.
- Controlled discharge operation.
- Quality pressure gauge with EPDM .O. rings.
- Ease of maintenance and refilling.
- Durable components and least spare parts consumption.
- Economically priced.
- Meets or exceeds requirements of BS EN3.
- Simple operation and maintenance.
- Rechargeable.
- Manufactured of durable high quality materials.
- Choice of dry chemical agents to satisfy specific protection requirements.
- Easy-to-read pressure gauge.
- Manuals & parts lists available for training purposes.
- Also available with CO<sub>2</sub> cartridge operated internally for marine application.
- 1 year limited warranty from date of delivery to original end-user purchaser.

#### Description

- Bristol shells are produced by a single step cold deep draw process which yields a seamless steel cylinder with an extremely high tensile strength.
- Bristol's unique pre-treatment of the raw low carbon steel not only consists of a cleaning process, but also applies a special lubricant which helps keep the interior and exterior shell surfaces scratch free.
- The collar and specially preformed bottom enclosure are MIG welded to produce a smooth, high integrity weld.
- Extinguisher shells are 100% factory hydrostatically tested in excess of 600 psi (41.4 bar).
- The powder paint process used by Bristol is superior to conventional liquid based paint systems in its ability to resist blistering, cracking, fading, chipping and corrosion.
- Before the extinguisher shells are painted, they are pretreated using a special phosphate bonding process. This enhances the paint adhesion and corrosion resistance.
- The specially formulated polyester powder paint is electrostatically applied and oven cured to help ensure complete coverage and uniform paint thickness.
- Bristol extinguisher valve bodies are made from a durable brass chrome-plated and CE marked.
- Model serial numbers simplify inspection and maintenance record keeping.
- Bristol extinguishers are vacuum-filled at the factory to precise filling tolerances.
- Pressurized to 15 bar and 100% leak tested.
- Bristol's dry chemical extinguishing agents are manufactured from the high quality raw materials and are carefully blended to meet stringent performance specifications. These agents are then tested to be free-flowing, the water repellent and electrically non-conductive.
- As a final quality control step, Bristol extinguishers are randomly sampled for performance testing, which includes weight percent discharge and discharge times.

# FIRE EXTINGUISHER



## Agent

- A monoammonium phosphate-based agent for use of Class A (wood, paper, cloth), Class B (flammable liquids and gases), and Class C (electrical) fires.
- A potassium bicarbonate-based agent which is the most effective bristol agent for knock-down of Class B (flammable liquids and gases) and C (electrical) fires.
- A sodium bicarbonate-based agent for use on Class B (flammable liquids and gases) and C (electrical) fires.

## Standard Portable sizes

1 Kg., 2 Kg., & 3 Kg., 4/4.5 Kg., 6 Kg., 9 Kg., & 12 Kg.

## Packing

Single piece cardboard boxes.

| Model Specification  | DP 1 A                   | DP 1           | DP 2           | DP 3           | DP 4 / 4.5     | DP 6            | DP 9           | DP 12           |
|--|--------------------------|----------------|----------------|----------------|----------------|-----------------|----------------|-----------------|
| Fire Class   | ABCE                     |                |                |                |                |                 |                |                 |
| Extinguishing Agent  | ABCE Dry Chemical Powder |                |                |                |                |                 |                |                 |
| Capacity (KG)  | 1                        | 2              | 2              | 6              | 4.5            | 6               | 9              | 12              |
| Discharge Time (sec)   | 6                        | 6              | 9              | 14             | 17             | 20              | 23             | 32              |
| Operating Temp Range(°C)                                     | From -20 °C to + 60 °C   |                |                |                |                |                 |                |                 |
| Propelling gas   | Nitrogen                 |                |                |                |                |                 |                |                 |
| Test Data (bar)<br>Working Pressure                          | 12 to 15 bar             |                |                |                |                |                 |                |                 |
| Test pressure  | 25 to 30 bar             |                |                |                |                |                 |                |                 |
| Dimensions and Weights<br>Overall height (mm)                | 360                      | 290            | 340            | 340            | 465            | 510             | 545            | 605             |
| Certification<br>BUREAU VERITAS<br>Certificate Reference No. | DBA 4.99.445/2           | DBA 4.99.445/7 | DBA 4.99.445/8 | DBA 4.99.445/9 | DBA 4.99.445/9 | DBA 4.99.445/13 | DBA 4.99.445/1 | DBA 4.99.445/14 |

## Kitemark approved

| Model                     | DP 1             | DP 2      | DP 4            | DP 6            | DP 9           | DP 12          |
|---------------------------|------------------|-----------|-----------------|-----------------|----------------|----------------|
| Capacity (Kg)             | 1                | 2         | 4               | 6               | 9              | 12             |
| Cylinder Diameter (mm)    | 86               | 120       | 140             | 161             | 190            | 190            |
| Cylinder Height (mm)      | 250              | 280       | 378             | 425             | 460            | 510            |
| Cylinder Volume (l)       | 0.7              | 1.2       | 1.8             | 2.6             | 3.4            | 3.6            |
| Cylinder weight (Kg)      | 7.27             | 11.67     | 12.17           | 16              | 18.43          | 24.9           |
| Fire Rating               | 5A & 34B         | 13A & 70B | 21A & 113B      | 27A & 183B      | 34A & 233B     | 43A & 233B     |
| Extinguisher Weight (Kg)  | 2.1              | 3.6       | 6.5             | 9.3             | 13.9           | 16.4           |
| Packing Size (L-W-H) (mm) | 130 x 130 x 300  |           | 150 x 180 x 480 | 170 x 200 x 540 | 200x 220 x 550 | 200x 220 x 630 |
| Working Pressure (Bar)    | 12 to 15         |           |                 |                 |                |                |
| Test Pressure             | 25 to 30         |           |                 |                 |                |                |
| Operation Temperature     | -20 °C to +60 °C |           |                 |                 |                |                |



KM503518

# CARTRIDGE TYPE DRY POWDER



## Model: DP 4 / 4.5C, DP 6C, DP 9C, DP 12C

### Application

- Cartridge type dry powder fire extinguisher, suitable for A,B,C & E fire classes such as wood, flammable liquids, gases & electric fire
- Reliable components are carefully chosen to give maximum efficiency along with high quality agent, to achieve high performance
- Bristol extinguishers designed and manufactured in compliance with BS 5423 & BS/EN3 3.1&3.3

### Features

- Seamless deep drawn container made of high tensile cold rolled sheet.
- Minimal welding points.
- Polyester resin electrostatically coated to give high quality appearance & protection against corrosion.
- High bursting pressure.
- Quality silk-screen printing with operating instruction.
- Quality machined and chrome plated brass valve with EPDM .O. ring.
- Built in pressure relief mechanism.
- Controlled discharge operation.
- Quality pressure gauge with EPDM .O. rings.
- Ease of maintenance and refilling.
- Durable components and least spare parts consumption.
- Economically priced.
- Meets or exceeds requirements of BS EN3.
- Simple operation and maintenance.
- Rechargeable.
- Manufactured of durable high quality materials.
- Choice of dry chemical agents to satisfy specific protection requirements.
- Easy-to-read pressure gauge.
- Manuals & parts lists available for training purposes.
- Also available with CO<sub>2</sub> cartridge operated internally for marine application.
- 1 year limited warranty from date of delivery to original end-user purchaser.

### Description

- Bristol shells are produced by a single step cold deep draw process which yields a seamless steel cylinder with an extremely high tensile strength.
- Bristol's unique pre-treatment of the raw low carbon steel not only consists of a cleaning process, but also applies a special lubricant which helps keep the interior and exterior shell surfaces scratch free.
- The collar and specially preformed bottom enclosure are MIG welded to produce a smooth, high integrity weld.
- Extinguisher shells are 100% factory hydrostatically tested in excess of 600 psi (41.4 bar).
- The powder paint process used by Bristol is superior to conventional liquid based paint systems in its ability to resist blistering, cracking, fading, chipping and corrosion.
- Before the extinguisher shells are painted, they are pretreated using a special phosphate bonding process. This enhances the paint adhesion and corrosion resistance.
- The specially formulated polyester powder paint is electrostatically applied and oven cured to help ensure complete coverage and uniform paint thickness.
- Bristol extinguisher valve bodies are made from a durable brass chrome-plated and CE marked.
- Model serial numbers simplify inspection and maintenance record keeping.
- Bristol extinguishers are vacuum-filled at the factory to precise filling tolerances.
- Pressurized to 15 bar and 100% leak tested.
- Bristol's dry chemical extinguishing agents are manufactured from the high quality raw materials and are carefully blended to meet stringent performance specifications. These agents are then tested to be free-flowing, the water repellent and electrically non-conductive.
- As a final quality control step, Bristol extinguishers are randomly sampled for performance testing, which includes weight percent discharge and discharge times.

# FIRE EXTINGUISHER



## Standard Portable Sizes

4 kg, 4.5 kg, 6 kg, 9 kg & 12 kg.

## Packing

Single Piece cardboard boxes.

| Model Specification  | DP 4/4.5 C                | DP 6 C          | DP 9 C         | DP 12 C         |
|--|---------------------------|-----------------|----------------|-----------------|
| Fire Class   | ABCE                      |                 |                |                 |
| Extinguishing Agent  | ABCE Dry Chemical Powder  |                 |                |                 |
| Capacity (KG)  | 4/4.5                     | 6               | 9              | 12              |
| Discharge Time (sec)   | 14                        | 17              | 21             | 26              |
| Operating Temp Range(°C)                                     | From -20 °C to + 60 °C    |                 |                |                 |
| Propelling gas   | Carbon Dioxide / Nitrogen |                 |                |                 |
| Test Data (bar)<br>Working Pressure                          | 12 to 15 bar              |                 |                |                 |
| Test pressure  | 25 to 30 bar              |                 |                |                 |
| Dimensions and Weights<br>Overall height (mm)                | 465                       | 510             | 545            | 605             |
| Certification<br>BUREAU VERITAS<br>Certificate Reference No. | DBA 4.99.445/9            | DBA 4.99.445/13 | DBA 4.99.445/1 | DBA 4.99.445/14 |

# PRESSURIZED DRY POWDER AUTOMATIC



**Model: DP 4.5A, DP 6A, DP 9A, DP 12A**

## Application

- Pressure type dry powder fire extinguisher, suitable for A, B, C & E fire classes such as wood flammable liquids, gases & electric fire.
- Reliable components are carefully chosen to give maximum efficiency along with high quality agent, to achieve high performance.
- Bristol extinguishers designed and manufactured in compliance with BS 5423 & BS/EN3 3.1 & 3.3.

## Features

- Seamless deep drawn container made of high tensile cold rolled sheet.
- Minimal welding points.
- Polyester resin electrostatically coated to give high quality appearance & protection against corrosion.
- High bursting pressure.
- Quality silk-screen printing with operating instruction.
- Quality machined and chrome plated brass valve with EPDM .O. ring.
- Built in pressure relief mechanism.
- Controlled discharge operation.
- Quality pressure gauge with EPDM .O. rings.
- Ease of maintenance and refilling.
- Durable components and least spare parts consumption.
- Economically priced.
- Meets or exceeds requirements of BS EN3.
- Simple operation and maintenance.
- Rechargeable.
- Manufactured of durable high quality materials.
- Choice of dry chemical agents to satisfy specific protection requirements.
- Easy-to-read pressure gauge.
- Manuals & parts lists available for training purposes.
- Also available with CO<sub>2</sub> cartridge operated internally for marine application.
- 1 year limited warranty from date of delivery to original end-user purchaser.

## Description

- Bristol shells are produced by a single step cold deep draw process which yields a seamless steel cylinder with an extremely high tensile strength.
- Bristol's unique pre-treatment of the raw low carbon steel not only consists of a cleaning process, but also applies a special lubricant which helps keep the interior and exterior shell surfaces scratch free.
- The collar and specially preformed bottom enclosure are MIG welded to produce a smooth, high integrity weld.
- Extinguisher shells are 100% factory hydrostatically tested in excess of 600 psi (41.4 bar).
- The powder paint process used by Bristol is superior to conventional liquid based paint systems in its ability to resist blistering, cracking, fading, chipping and corrosion.
- Before the extinguisher shells are painted, they are pretreated using a special phosphate bonding process. This enhances the paint adhesion and corrosion resistance.
- The specially formulated polyester powder paint is electrostatically applied and oven cured to help ensure complete coverage and uniform paint thickness.
- Bristol extinguisher valve bodies are made from a durable brass chrome-plated and CE marked.
- Model serial numbers simplify inspection and maintenance record keeping.
- Bristol extinguishers are vacuum-filled at the factory to precise filling tolerances.
- Pressurized to 15 bar and 100% leak tested.
- Bristol's dry chemical extinguishing agents are manufactured from the high quality raw materials and are carefully blended to meet stringent performance specifications. These agents are then tested to be free-flowing, the water repellent and electrically non-conductive.
- As a final quality control step, Bristol extinguishers are randomly sampled for performance testing, which includes weight percent discharge and discharge times.



# FIRE EXTINGUISHER



## Standard Portable Sizes

4.5 kg, 6 kg, 9 kg & 12 kg.

## Packing

Single Piece cardboard boxes.

## Technical Data

| Model Specification  | DP 4.5A                  | DP 6A | DP 9A | DP 12A |
|--|--------------------------|-------|-------|--------|
| Fire Class   | ABCE                     |       |       |        |
| Extinguishing Agent  | ABCE Dry Chemical Powder |       |       |        |
| Capacity (KG)  | 4.5                      | 6     | 9     | 12     |
| Discharge Time (sec)   | 4-5                      | 5-6   | 4-5   | 5-6    |
| Operating Temp Range(°C)                                     | From -20 °C to + 60 °C   |       |       |        |
| Test Data (bar)<br>Working Pressure                          | 12 – 15 bar              |       |       |        |
| Test pressure  | 25 to 30 bar             |       |       |        |
| Dimensions and Weights<br>Overall height (mm)                | 367                      | 427   | 500   | 550    |
| Certification<br>BUREAU VERITAS<br>Certificate Reference No. | DBA 4.99.445/10          |       |       |        |

# MOBILE DRY POWDER – PRESSURIZED



**Model: MDP 25, MDP 30, MDP 50, MDP 75, MDP 100, MDP 150**

## Application

- Pressure type Mobile dry powder fire extinguisher, suitable for A,B,C & E fire classes such as wood, flammable liquids, gases & electric fire
- Reliable components are carefully chosen to give maximum efficiency along with high quality agent, to achieve high performance
- Bristol extinguishers are designed and manufactured in compliance with BS 5423 & BS/EN3 3.1&3.3

## Features

- Polyester resin electrostatically coated to give high quality weather resistance.
- High bursting pressure.
- Trolley Nozzle with pistol type for ON and OFF.
- Quality machined and chrome plated brass valve with EPDM "O" ring.
- Built in pressure relief mechanism.
- Controlled discharge operation.
- Quality pressure gauge with EPDM "O" ring.
- Ease of maintenance and refilling.
- Durable components and least spare parts consumption.
- Two wheels as standard.
- Available with 3 wheels.

## Specification

See Technical Data overleaf.

## Standard Portable sizes

25Kg, 30Kg, 50Kg, 75Kg, 100Kg & 150Kg

## Description

- Extinguisher shells are 100% factory hydrostatically tested in excess of 600 psi (41.4 bar).
- The powder paint process used by bristol is superior to conventional liquid based paint systems in its ability to resist blistering, cracking, fading, chipping and corrosion.
- Before the extinguisher shells are painted, they are pretreated using a special phosphate bonding process. This enhances the paint adhesion and corrosion resistance.
- The specially formulated polyester powder paint is electrostatically applied and oven cured to help ensure complete coverage and uniform paint thickness.
- Bristol extinguisher valve bodies are made from a durable brass chrome-plated and CE marked.
- Model serial numbers simplify inspection and maintenance record keeping.
- Bristol extinguishers are vacuum-filled at the factory to precise filling tolerances.
- Pressurized to 15 bar and 100% leak tested.
- Bristol's dry chemical extinguishing agents are manufactured from the high quality raw materials and are carefully blended to meet stringent performance specifications. These agents are then tested to be free-flowing, the water repellent and electrically non-conductive.
- As a final quality control step, bristol extinguishers are randomly sampled for performance testing, which includes weight percent discharge and discharge times.

# FIRE EXTINGUISHER



## Technical Data

| Model Specification                           | MDP 25                   | MDP 30 | MDP 50 | MDP 75 | MDP 100 | MDP 150 |
|---|--------------------------|--------|--------|--------|---------|---------|
| Fire Class                                    | ABCE                     |        |        |        |         |         |
| Extinguishing Agent                           | ABCE Dry Chemical Powder |        |        |        |         |         |
| Capacity (KG)                                 | 25                       | 30     | 50     | 75     | 100     | 150     |
| Discharge Time (sec)                          | 40                       | 45     | 50     | 60     | 70      | 90      |
| Operating Temp Range(°C)                      | From -20 °C to +60 °C    |        |        |        |         |         |
| Propelling gas                                | Nitrogen                 |        |        |        |         |         |
| Test Data (bar)                               | 12 to 15 bar             |        |        |        |         |         |
| Working Pressure                              | 25 to 30 bar             |        |        |        |         |         |
| Test pressure                                 | 25 to 30 bar             |        |        |        |         |         |
| Dimensions and Weights<br>Overall height (mm) | 880                      | 1020   | 1020   | 1150   | 1170    | 1410    |

# MOBILE DRY POWDER – CARTRIDGE TYPE



**Model: MDP 25C, MDP 30C, MDP 50C, MDP 75C, MDP 100C, MDP 150C**

## Application

- Trolley Fire Extinguishers are manufactured to provide protection for hazardous areas where the potential for large fire exists. They can be strategically located to provide maximum protection for a wide variety of hazards, while taking up a minimum of space, and requiring only one trained person for operation.
- This wheeled extinguisher is completely self-contained. An attached nitrogen cylinder is the only pressure source required to completely expel the fire extinguishing agent.
- Some typical applications include paint spray booths, offshore platforms, loading racks, fuel storage areas, airports, and heavy manufacturing operations.
- Cartridge type dry powder fire extinguisher, suitable for A, B, C & E fire classes such as wood flammable liquids, gases & electric fire.
- Reliable components are carefully chosen to give maximum efficiency along with high quality agent, to achieve high performance.
- Bristol extinguishers designed and manufactured in compliance with BS 5423 & BS/EN3 3.1 & 3.3.

## Features

- Polyester resin electrostatically coated to give high quality as before.
- Quality machined and chrome plated brass safety valve with EPDM "O" ring.
- Built in pressure relief mechanism.
- Controlled discharge operation.
- Quality external CO<sub>2</sub> / N<sub>2</sub> Cartridge available.
- Durable components and least spare parts consumption.
- Two wheels as a standard.
- Easy pressurization by turning the nitrogen cylinder hand valve.
- Simple operation provided by discharged Bristol nozzle with level position on & off valve.
- Bristol nozzle barrel provides a solid, round agent stream.
- Standard fill cap indicates when unit is pressurized.
- Options: hard pistol nozzle, quick-opening nitrogen cylinder valve, heavy-duty rubber coated wheels.
- 1 year limited warranty.
- 3 wheel driving cylinder available.

## Standard Portable sizes

25Kg, 30Kg, 50Kg, 75Kg, 100Kg & 150Kg

## Packing

Single piece cardboard boxes.

## Temperature

Standard models are equipped with nitrogen cylinders which are listed and approved for operation in environments with temperatures between -20 - +60°C.

## Description

- Extinguisher shells are 100% factory hydrostatically tested in excess of 600 psi (41.4 bar).
- The powder paint process used by Bristol is superior to conventional liquid based paint systems in its ability to resist blistering, cracking, fading, chipping and corrosion.
- Before the extinguisher shells are painted, they are pretreated using a special phosphate bonding process. This enhances the paint adhesion and corrosion resistance.
- The specially formulated polyester powder paint is electrostatically applied and oven cured to help ensure complete coverage and uniform paint thickness.
- Bristol extinguisher valve bodies are made from a durable brass chrome-plated and CE marked.
- Model serial numbers simplify inspection and maintenance record keeping.
- Bristol extinguishers are vacuum-filled at the factory to precise filling tolerances.
- Pressurized to 15 bar and 100% leak tested.
- Bristol's dry chemical extinguishing agents are manufactured from the high quality raw materials and are carefully blended to meet stringent performance specifications. These agents are then tested to be free-flowing, the water repellent and electrically non-conductive.
- As a final quality control step, Bristol extinguishers are randomly sampled for performance testing, which includes weight percent discharge and discharge times.

# FIRE EXTINGUISHER



## Technical Data

| Model Specification                           | MDP 25C                  | MDP 30C | MDP 50C | MDP 75C | MDP 100C | MDP 150C |
|---|--------------------------|---------|---------|---------|----------|----------|
| Fire Class                                    | ABCE                     |         |         |         |          |          |
| Extinguishing Agent                           | ABCE Dry Chemical Powder |         |         |         |          |          |
| Capacity (KG)                                 | 25                       | 30      | 50      | 75      | 100      | 150      |
| Discharge Time (sec)                          | 40                       | 45      | 50      | 60      | 70       | 90       |
| Operating Temp Range(°C)                      | From -20 °C to +60 °C    |         |         |         |          |          |
| Test Data (bar)<br>Working Pressure           | 12 to 15 bar             |         |         |         |          |          |
| Test pressure                                 | 25 to 30 bar             |         |         |         |          |          |
| Dimensions and Weights<br>Overall height (mm) | 880                      | 1020    | 1020    | 1150    | 1170     | 1410     |

# CARBON DIOXIDE



## Model: CD 2, CD 5, CD 6

### Application

Bristol Carbon Dioxide Fire Extinguishers are designed to protect areas where Class B (flammable liquids and gases) or Class C (energized electrical equipment) fires could occur. They may be used indoors where winds and drafts do not affect discharge or where a clean extinguishing agent is required.

### Typical applications include:

- Laboratories
- Electronic equipment
- Low voltage electrical equipment

### Features

- Simple operation and maintenance.
- Portable, compact design.
- Non-corrosive, non-conductive extinguishing agent.
- Carbon steel shells. The steel shell also has a base design which resists corrosion for a longer service life.
- Lightweight aluminum shell also available.
- Both steel and aluminum models are available in different sizes and capacities.
- All models with heavy duty brackets to accommodate weight.
- Operating temperature range is -20 to +60 °C.
- Seamless container made of high quality carbon steel.
- High quality polyester paint finish. The paint resists cracking and adds an extra protection against corrosion.
- Rechargeable.
- Ease of maintenance & refilling.
- Available in alloy steel cylinder (light weight) and aluminum alloy cylinder.
- Also available as swivel or front horn.

### Description

- The easy grip handle provides non-slip holding and quick activation of the extinguisher.
- The ring pin and visual seal help prevent unwanted discharge of the extinguisher. If the extinguisher is tampered with, the visual seal self-destructs, making detection of tampering easy. Metal ring pins are designed to help prevent accidental discharge if the extinguisher is dropped or mishandled.

### Standard Portable sizes

2 Kg., 5 Kg. & 6 Kg.

### Packing

Single piece cardboard boxes.

# FIRE EXTINGUISHER



## Model: CD 2, CD 5, CD 6

| Model                     | CD2               | CD5         | CD2               | CD5               | CD6               |
|---------------------------|-------------------|-------------|-------------------|-------------------|-------------------|
| Capacity (Kg)             | 2                 | 5           | 2                 | 5                 | 6                 |
| Cylinder Diameter (mm)    | 105               | 138         | 115               | 152               | 152               |
| Cylinder Height (mm)      | 475               | 635         | 520               | 670               | 770               |
| Cylinder Volume (l)       | 3                 | 7.50        |                   |                   |                   |
| Cylinder weight (Kg)      | 4.20              | 8.50        | 5.60              | 13.20             | 15.10             |
| Fire Rating               | 34B               | 89B         | 34B               | 89B               |                   |
| Extinguisher Weight (Kg)  | 7                 | 14          | 8.40              | 19.13             | 22.20             |
| Packing Size (L-W-H) (mm) | 160x130x600       | 210x150x780 | 600x170x130       | 700x230x175       | 790x230x175       |
| Working Pressure (Bar)    | 174               |             | 50                |                   |                   |
| Test Pressure             |                   |             | 250               |                   |                   |
| Operation Temperature     | -30 °C to + 60 °C |             | -20 °C to + 60 °C | -30 °C to + 60 °C | -20 °C to + 60 °C |



# CARBON DIOXIDE WHEELED



## Model: CD 10, CD 30, CD 50

### Application

Bristol Carbon dioxide Wheeled Fire Extinguishers are designed to protect areas where class B (flammable liquids and gases) or Class C (energized electrical equipment) fires could occur. They may be used indoors where winds and drafts do not affect discharge.

Typical applications include:

- Aviation hangers
- Manufacturing facilities

### Features

- Simple operation and maintenance.
- Portable, compact design.
- Non-corrosive, non-conductive, extinguishing agent.
- Carbon steel shells. The steel shell also has a base design which resists corrosion for a longer service life.
- Operating temperature range is -20 to +60 °C.
- High quality polyester paint finish. The paint resists cracking and adds an extra protection against corrosion.
- Rechargeable.
- Ease of maintenance & refilling.
- Available in 10, 30, 50 Kg. models.
- One person operation.
- Available in twin cylinder model with one manifold connection operation.

### Standard Portable sizes

10 Kg, 30 Kg & 50 Kg

### Packing

Single piece cardboard boxes.



# FIRE EXTINGUISHER



## Carbon Dioxide Wheeled Extinguishers

| Model Specification                                    | CD 10                  | CD 30 | CD 50 |
|--|------------------------|-------|-------|
| Fire Class   | BCE                    |       |       |
| Extinguishing Agent                                    | CO2                    |       |       |
| Capacity (KG)  | 10                     | 30    | 50    |
| Discharge Time (sec)                                   | 7                      | 15    | 19    |
| Operating Temp Range(°C)                               | From -20 °C to + 60 °C |       |       |
| Colour   | Black                  |       |       |
| Test Data (bar)  | 50 bar                 |       |       |
| Working Pressure                                       | 50 bar                 |       |       |
| Test pressure  | 250 bar                |       |       |
| Dimensions and Weights Overall<br>Cylinder Length (mm) | 1170                   | 1445  | 1610  |

# PRESSURIZED FOAM



## Model: FE 6, FE 9

### Application

- Pressure type foam fire extinguisher, suitable for A & B fire classes such as ordinary combustible materials and flammable liquids.
- Reliable components are carefully chosen to give maximum efficiency along with high quality agent, to achieve high performance.
- Bristol extinguishers are designed and manufactured in compliance with BS 5423 & BS/EN3 3.1 & 3.3.

### Features

- Seamless deep drawn container made of high tensile cold rolled sheet.
- Minimal welding points to give attractive appearance.
- Polyester resin electrostatically coated to give high quality weather resistance.
- Quality silk-screen printing with operating instruction.
- High bursting pressure.
- Epoxy resin electrostatically internal coating to give high quality against corrosion.
- 3% AFFF Hydral foam or 6% AFFF Hydral foam can be used.
- Quality machined and chrome plated brass safety valve with EPDM "O" ring.
- Built in pressure relief mechanism.
- Controlled discharge operation.
- Quality pressure gauge with EPDM "O" rings.
- Ease of maintenance and refilling.
- Durable components and least spare parts consumption.
- Meets or exceeds BS requirements.
- Simple operation and maintenance.
- Squeeze grip, positive on-off operation.
- Brass chrome-plated valve.
- Carbon steel shell with protective inner liner & corrosion resistant.
- Easy service construction
- Available in 6 & 9 Liters.

### Description

Bristol Foam Extinguisher can be utilized in many Class A hazards such as office environments and industrial locations, as well as warehouse and oxidizing chemical storage areas.

### Agent

Foam

### Standard Portable sizes

6 Ltr. & 9 Ltr.

### Packing

Single piece cardboard boxes.

# FIRE EXTINGUISHER



## Technical Data

| Model                     | FE6             | FE9          | FE6         | FE9         |
|---------------------------|-----------------|--------------|-------------|-------------|
| Capacity (Kg)             | 6               | 9            | 6           | 9           |
| Cylinder Diameter (mm)    | 160             | 180          | 161         | 175         |
| Cylinder Height (mm)      | 470             | 525          | 510         | 600         |
| Cylinder Volume (l)       | 8               | 11.30        | 8           | 11.3        |
| Cylinder weight (Kg)      | 3.30            | 4.60         | 2.60        | 4.00        |
| Fire Rating               | 21A, 144B, C    | 21A, 183B, C |             |             |
| Extinguisher Weight (Kg)  | 10              | 14           | 9.60        | 14.00       |
| Packing Size (L-W-H) (mm) | 170x180x580     | 190x100x640  | 170x200x540 | 220x220x550 |
| Working Pressure (Bar)    |                 | 18           |             | 12 to 15    |
| Test Pressure (Bar)       |                 | 27           |             | 25 to 30    |
| Operation Temperature     | 0 °C to + 60 °C |              |             |             |



# CARTRIDGE TYPE FOAM



## Model: FE 6C, FE 9C

### Application

- Cartridge type foam fire extinguisher, suitable for A & B fire classes such as ordinary combustible materials and flammable liquids.
- Reliable components are carefully chosen to give maximum efficiency along with high quality agent, to achieve high performance.
- Bristol extinguishers are designed and manufactured in compliance with BS 5423 & BS/EN3 3.1&3.3

### Features

- Seamless deep drawn container made of high tensile cold rolled sheet.
- Minimal welding points to give attractive appearance.
- Polyester resin electrostatically coated to give high quality weather resistance.
- Quality silk-screen printing with operating instructions.
- High bursting pressure.
- Epoxy resin electrostatically internal coating to give high quality against corrosion.
- 3% AFFF Hydral foam or 6% AFFF Hydral foam can be used.
- Quality machined and chrome plated brass safety vale with EPDM "O" ring.
- Built in pressure relief mechanism.
- Controlled discharge operation.
- Quality pressure gauge with EPDM "O" rings.
- Ease of maintenance and refilling.
- Durable components and least spare parts consumption.
- Meets or exceeds BS requirements.
- Simple operation and maintenance.
- Squeeze grip, positive on-off operation.
- Brass chrome-plated valve.
- Carbon steel shell with protective inner liner & corrosion resistant.
- Easy service construction
- Available in 6 & 9 Liters.

### Description

Bristol Foam Extinguisher can be utilized in many Class A hazards such as office environments and industrial locations, as well as warehouse and oxidizing chemical storage areas.

### Agent

Foam

### Standard Portable sizes

6 Ltr. & 9 Ltr.

### Packing

Single piece cardboard boxes.

# FIRE EXTINGUISHER



## Technical Data

| Model Specification       | FE 6C                | FE 9C |
|---------------------------|----------------------|-------|
| Fire Class                | AB                   |       |
| Extinguishing Agent       | Foam AFFF Hydral     |       |
| Capacity (KG)             | 6                    | 9     |
| Discharge Time (sec)      | 45                   | 85    |
| Operating Temp Range(°C)  | From 0 °C to + 60 °C |       |
| Propelling gas            | Nitrogen             |       |
| Test Data (bar)           | 12 – 15 bar          |       |
| Working Pressure          | 25 to 30 bar         |       |
| Test pressure             | 25 to 30 bar         |       |
| Dimensions and Weights    |                      |       |
| Overall height (mm)       | 510                  | 545   |
| Certification             | BUREAU VERITAS       |       |
| Certificate Reference No. | DBA 4.99.445/11      |       |



# MOBILE FOAM – PRESSURIZED



## Model: MFE 10, MFE 20, MFE 35

### Application

- Pressure type mobile foam fire extinguisher, suitable for A&B fire classes such as ordinary combustibles and flammable liquids.
- Reliable components are carefully chosen to give maximum efficiency along with high quality agent to achieve high performance
- Bristol extinguishers designed and manufactured in compliance with BS 5423 & BS/EN3 3.1&3.3.

### Features

- Polyester resin electrostatically coated to give high quality weather resistance.
- High bursting pressure.
- Epoxy resin electrostatically internal coating to give high quality against corrosion.
- 3% AFFF Hydral foam or 6% AFFF Hydral foam can be used.
- Quality machined and chrome plated safety valve with EPDM “O” ring.
- Built in pressure relief mechanism.
- Controlled discharge operation with pistol nozzle.
- Quality Pressure gauge with EPDM “O” rings.
- Ease of maintenance and refilling.
- Durable components and least spare parts consumption.
- 1 year limited warranty.
- Two wheels as standard.
- Available with 3 wheels.

### Specification

See Technical Data overleaf.

### Standard Portable sizes

10 Gal, 20 Gal & 35 Gal.

### Packing

Single piece cardboard boxes.

# FIRE EXTINGUISHER



## Technical Data

| Model Specification                           | MFE 10               | MFE 20 | MFE 35 |
|---|----------------------|--------|--------|
| Fire Class                                    | AB                   |        |        |
| Extinguishing Agent                           | Foam AFFF Hydral     |        |        |
| Capacity (KG)                                 | 10                   | 20     | 35     |
| Discharge Time (sec)                          | 85                   | 35     | 150    |
| Operating Temp Range(°C)                      | From 0 °C to + 60 °C |        |        |
| Test Data (bar)<br>Working Pressure           | 12 – 15 bar          |        |        |
| Test pressure                                 | 25 to 30 bar         |        |        |
| Dimensions and Weights<br>Overall height (mm) | 1020                 | 1370   | 1410   |

# MOBILE FOAM – CARTRIDGE TYPE



## Model: MFE 10C, MFE 20C, MFE 35C

### Application

- Cartridge type mobile foam fire extinguisher, suitable for A & B fire classes such as ordinary combustible materials and flammable liquids.
- Reliable components are carefully chosen to give maximum efficiency along with high quality agent, to achieve high performance.
- Bristol extinguishers are designed and manufactured in compliance with BS 5423 & BS/EN3 3.1 & 3.3.

### Features

- Polyester resin electrostatically coated to give high quality as before.
- Trolley Nozzle with pistol type for ON and OFF.
- Quality machined and chrome plated brass safety valve with EPDM "O" ring.
- Built in pressure relief mechanism.
- Controlled discharge operation.
- Quality external CO<sub>2</sub> / N<sub>2</sub> Cartridge.
- Ease of maintenance and refilling.
- Durable components and least spare parts consumption.
- 1 year limited warranty.
- Two wheels as a standard.
- Available with 3 wheels.

### Specification

See Technical Data overleaf.

### Standard Portable sizes

10 Gal, 20 Gal & 35 Gal.

### Packing

Single piece cardboard boxes.



# FIRE EXTINGUISHER



## Technical Data

| Model Specification      | MFE 10C              | MFE 20C | MFE 35C |
|--------------------------|----------------------|---------|---------|
| Fire Class               | AB                   |         |         |
| Extinguishing Agent      | Foam AFFF Hydral     |         |         |
| Capacity (KG)            | 10                   | 20      | 35      |
| Discharge Time (sec)     | 85                   | 35      | 150     |
| Operating Temp Range(°C) | From 0 °C to + 60 °C |         |         |
| Test Data (bar)          | 12 – 15 bar          |         |         |
| Working Pressure         | 25 to 30 bar         |         |         |
| Test pressure            | 25 to 30 bar         |         |         |
| Dimensions and Weights   |                      |         |         |
| Overall height (mm)      | 1020                 | 1370    | 1410    |

# PRESSURIZED WATER



## Model: WE 6, WE 9

### Application

- Pressure type water fire extinguisher, suitable for A fire classes such as ordinary combustible materials.
- Reliable components are carefully chosen to give maximum efficiency along with high quality agent, to achieve high performance.
- Bristol extinguishers are designed and manufactured in compliance with BS 5423 & BS/EN3 3.1 & 3.3.

### Features

- Seamless deep drawn container made of high tensile cold rolled sheet.
- Minimal welding points to give attractive appearance.
- Polyester resin electrostatically coated to give high quality weather resistance.
- High bursting pressure.
- Epoxy resin electrostatically internal coating to give high quality against corrosion.
- Quality silk-screen printing with operating instructions.
- Quality machined and chrome plated brass valve with EPDM "O" ring.
- Built in pressure relief mechanism.
- Controlled discharge operation.
- Quality pressure gauge with EPDM "O" rings.
- Ease of maintenance and refilling.
- Durable components and least spare parts consumption.
- Meets or exceeds BS requirements.
- Simple operation and maintenance.
- Squeeze grip, positive on-off operation.
- Brass chrome plated valve.
- Carbon Steel Shell with protective inner liner & corrosion resistant.
- Easy service construction.
- Available in 6 & 9 Liters.

### Description

Bristol Stainless Steel Water Extinguisher can be utilized in many Class A hazards such as office environments and industrial locations, as well as warehouse and oxidizing chemical storage areas.

### Specification

See Technical Data overleaf.

### Standard Portable sizes

6 Ltr. & 9 Ltr.

### Packing

Single piece cardboard boxes.

# FIRE EXTINGUISHER



## Technical Data

| Model Specification  | WE 6                 | WE 9 |
|--|----------------------|------|
| Fire Class   | A                    |      |
| Extinguishing Agent  | Water                |      |
| Capacity (KG)  | 6                    | 9    |
| Discharge Time (sec)   | 40                   | 49   |
| Operating Temp Range(°C)                                     | From 0 °C to + 60 °C |      |
| Test Data (bar)  | 12 to 15 bar         |      |
| Working Pressure   | 25 to 30 bar         |      |
| Test pressure  | 25 to 30 bar         |      |
| Dimensions and Weights                                       |                      |      |
| Overall height (mm)  | 510                  | 545  |
| Certification<br>BUREAU VERITAS<br>Certificate Reference No. | DBA 4.99.445/12      |      |

## Kitemark approved

| Model                     | WE 6             | WE 9        |
|---------------------------|------------------|-------------|
| Capacity (Kg)             | 6                | 9           |
| Cylinder Diameter (mm)    | 160              | 175         |
| Cylinder Height (mm)      | 497              | 600         |
| Cylinder Volume (l)       | 3.5              | 4.8         |
| Cylinder weight (Kg)      | 39.77            | 52.97       |
| Fire Rating               | 8A               | 13A         |
| Extinguisher Weight (Kg)  | 10               | 14.3        |
| Packing Size (L-W-H) (mm) | 185x200x630      | 185x200x710 |
| Working Pressure (Bar)    | 13               |             |
| Test Pressure (Bar)       | 25               |             |
| Operation Temperature     | -5 °C to + 60 °C |             |



# CARTRIDGE TYPE WATER



## Model: WE 6C, WE 9C

### Application

- Cartridge type water fire extinguisher, suitable for A fire class such as ordinary combustible materials.
- Reliable components are carefully chosen to give maximum efficiency along with high quality agent, to achieve high performance.
- Bristol extinguishers are designed and manufactured in compliance with BS5423 & BS/EN3 3.1 & 3.3

### Features

- Seamless deep drawn container made of high tensile cold rolled sheet.
- Minimal welding points to give attractive appearance.
- Polyester resin electrostatically coated to give high quality weather resistance.
- High bursting pressure.
- Epoxy resin electrostatically internal coating to give high quality against corrosion.
- Quality silk-screen printing with operating instruction.
- Quality machined and chrome plated brass valve with EPDM "O" ring.
- Built in pressure relief mechanism.
- Controlled discharge operation.
- Quality pressure gauge with EPDM "O" rings.
- Ease of maintenance and refilling.
- Durable components and least spare parts consumption.
- Meets or exceeds BS requirements.
- Simple operation and maintenance.
- Squeeze grip, positive on-off operation.
- Brass chrome plated valve.
- Carbon Steel Shell with protective inner liner & corrosion resistant.
- Easy service construction.
- Available in 6 & 9 Liters.

### Description

Bristol Stainless Steel Water Extinguisher can be utilized in many Class A hazards such as office environments and industrial locations, as well as warehouse and oxidizing chemical storage areas.

### Specification

See Technical Data overleaf.

### Standard Portable sizes

6 Ltr. & 9 Ltr.

### Packing

Single piece cardboard boxes.

# FIRE EXTINGUISHER



## Technical Data

| Model Specification      | WE 6 C               | WE 9 C |
|--------------------------|----------------------|--------|
| Fire Class               | A                    |        |
| Extinguishing Agent      | Water                |        |
| Capacity (KG)            | 6                    | 9      |
| Discharge Time (sec)     | 40                   | 49     |
| Operating Temp Range(°C) | From 0 °C to + 60 °C |        |
| Test Data (bar)          | 12 to 15 bar         |        |
| Working Pressure         | 25 to 30 bar         |        |
| Test pressure            | 25 to 30 bar         |        |
| Dimensions and Weights   | 510                  | 545    |
| Overall height (mm)      |                      |        |

# MOBILE PRESSURIZED WATER



## Model: MWE 10, MWE 20, MWE 35

### Application

- Pressure Type mobile water fire extinguisher, suitable for A fire class such as ordinary combustible materials.
- Reliable components are carefully chosen to give maximum efficiency along with high quality agent, to achieve high performance.
- Bristol Extinguishers designed and manufactured in compliance with BS5423 & BS/EN3 3.1 & 3.3

### Features

- Polyester resin electrostatically coated to give high quality weather resistance.
- High bursting pressure.
- Epoxy resin electrostatically internal coating to give high quality against corrosion.
- Quality machined and chrome plated brass safety valve with EPDM "O" ring
- Built in pressure relief mechanism.
- Controlled discharge operation with pistol nozzle.
- Quality Pressure gauge with EPDM "O" rings.
- Ease of maintenance and refilling.
- Durable components and least spare parts consumption.
- Two wheels as standard
- Available with 3 wheels.

### Standard Portable sizes

10 Ltr, 20 Ltr & 35 Ltr.

### Packing

Single piece cardboard boxes.

# FIRE EXTINGUISHER



## Technical Data

| Model Specification                           | MWE 10              | MWE 20 | MWE 35 |
|---|---------------------|--------|--------|
| Fire Class                                    | A                   |        |        |
| Extinguishing Agent                           | Water               |        |        |
| Capacity (KG)                                 | 10                  | 20     | 35     |
| Discharge Time (sec)                          | 85                  | 135    | 150    |
| Operating Temp Range(°C)                      | From -20°C to +60°C |        |        |
| Propelling gas                                | Nitrogen            |        |        |
| Test Data (bar)<br>Working Pressure           | 12 to 15 bar        |        |        |
| Test pressure                                 | 25 to 30 bar        |        |        |
| Dimensions and Weights<br>Overall height (mm) | 1020                | 1370   | 1410   |

# MOBILE CARTRIDGE TYPE WATER



## Model: MWE 10C, MWE 20C, MWE 35C

### Application

- Cartridge type mobile water fire extinguisher, suitable for A fire classes such as ordinary combustible materials.
- Reliable components are carefully chosen to give maximum efficiency along with high quality agent, to achieve high performance.
- Bristol Extinguishers are designed and manufactured in compliance with BS 5423 & BS/EN3 3.1 & 3.3

### Features

- Polyester resin electrostatically coated to give high quality weather resistance.
- Trolley Nozzle with pistol type for ON and OFF.
- High bursting pressure.
- Epoxy resin electrostatically internal coating to give high quality against corrosion.
- Quality machined and chrome plated brass safety valve with EPDM "O" ring.
- Built in pressure relief mechanism.
- Controlled discharge operation with pistol nozzle.
- Quality Pressure gauge with EPDM "O" rings.
- Ease of maintenance and refilling.
- Durable components and least spare parts consumption.
- Two wheels as standard.
- Available with 3 wheels.

### Standard Portable sizes

10 Ltr, 20 Ltr & 35 Ltr.

### Packing

Single piece cardboard boxes.



# FIRE EXTINGUISHER



## Technical Data

| Model Specification                           | MWE 10C                 | MWE 20C | MWE 35C |
|---|-------------------------|---------|---------|
| Fire Class                                    | A                       |         |         |
| Extinguishing Agent                           | Water                   |         |         |
| Capacity (KG)                                 | 10                      | 20      | 35      |
| Discharge Time (sec)                          | 85                      | 135     | 150     |
| Operating Temp Range(°C)                      | From -20°C to +60°C     |         |         |
| Propelling gas                                | Carbon Dioxide/Nitrogen |         |         |
| Test Data (bar)<br>Working Pressure           | 12 to 15 bar            |         |         |
| Test pressure                                 | 25 to 30 bar            |         |         |
| Dimensions and Weights<br>Overall height (mm) | 1020                    | 1370    | 1410    |





## Bristol Fire Engineering

Fire Fighting Solutions Provider

Tel: +971 4 3472426 Fax: +971 4 3472363, P.O.Box 74582 Dubai, UAE  
Email: sales@bristol-fire.com www.bristol-fire.com

### Branches

**Abu Dhabi: Concorde Trading Company**  
Tel: +971 2 6668770 Fax: +971 2 6667863

**Al Ain: Concorde Trading Company**  
TEL: +971 3 7642267 Fax: +971 3 7642268

**Sharjah: Corodex Agencies**  
TEL:+971 6 5430800 FAX:+971 6 5430801

**Dubai: Corodex Trading Company**  
TEL: +971 4 3472900 FAX:+971 4 3472796

**Corodex Agencies (Fire and Safety Equipment)**  
TEL:+971 4 3472530 FAX:+971 4 3472501

**Bristol Fire Engineering**  
TEL:+971 4 3472426 Fax: +971 4 3472363

**Corodex Agencies**  
TEL: +971 4 2668966 FAX:+971 4 2624617

**Sudan: Corodex Agencies**  
TEL: +249 155 885225 FAX: +249 155 885233

**Qatar: International Gulf Trading Company**  
TEL:+974 4694340 FAX:+974 4694467

**OMAN: Integrated Engineering Solutions (IES)**  
TEL:+968 24497203 FAX:+968 24495293

**Canada: CCG Fire and Water**  
TEL:+1 204 5100701 FAX:+1 204 2610324

### Distributors

Afghanistan  
Azerbaijan  
Iraq  
Nigeria  
Pakistan  
Saudi Arabia  
Syria  
Yemen

# BRISTOL

**Fire Engineering**

Tel: +971 4 3472426 Fax: +971 4 3472363, P.O.Box 74582 Dubai, UAE  
Email: sales@bristol-fire.com www.bristol-fire.com

Member of



Since 1974

CONCORDE - CORODEX GROUP  
OF COMPANIES U.A.E.